

THE DEFINITIVE GUIDE TO DRESS DESIGN



BY
REPSKETCH

C O N T E N T S

PART ONE:

Embarking on the Journey of a Dress

1.1 Evolution of Dresses.....	5
---	---

PART TWO:

Navigating through the Elements of a Dress

2.1 Basic dress anatomy.....	13
2.2 Dress seam construction.....	15
2.3 Dress points of measurement	18

PART THREE:

Exploring the Types of Dresses

3.1 Types of dresses - Length	22
3.2 Types of dresses - Sleeve length	23
3.3 Types of dresses - Waistline	26
3.4 Types of dresses - Hemline	28
3.5 Types of dresses - Overall	30

PART FOUR:

Diving into RepSketch's Component Library

4.1 Necklines.....	37
4.2 Sleeves.....	41
4.3 Pockets & Flaps.....	46
4.4 Buttons.....	48
4.5 Zipper Pullers.....	49
4.6 Washcare Symbols.....	50
4.7 Croquis.....	51
4.8 Graphics & Logos.....	52

C O N T E N T S

PART FIVE:

Unveiling Industry-Ready Technical Sketches Tailored for Techpacks

5.1 What is a Techpack ?.....	56
5.2 Sample Dress Technical Sketches.....	59

PART SIX:

Step-by-step Dress-making Tutorial on Repsketch

6.1 How to draw a dress on Repsketch ?.....	61
---	----



PART 1:

EMBARKING ON THE
JOURNEY OF A
DRESS

1.1

INTRODUCTION

A dress is a type of clothing item typically worn by women that consists of a bodice and a skirt, which can be one piece or two separate pieces. Dresses come in various styles, lengths, and designs. They have a rich history and cultural significance, come in various styles and materials, and are a versatile form of clothing that can express personal style and serve various purposes. They continue to be a staple in the world of fashion, offering endless possibilities for self-expression and creativity.

1. EVOLUTION OF DRESSES

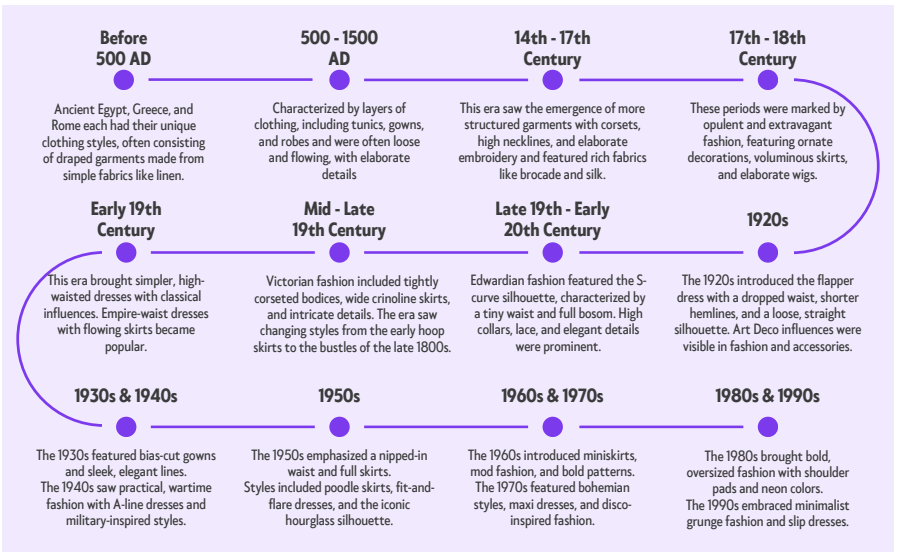
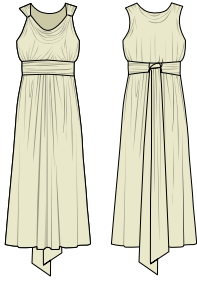
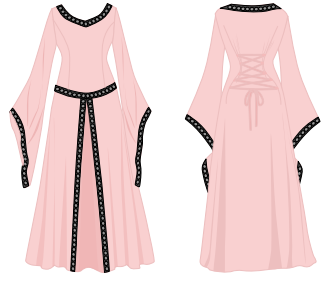


Figure 1 : The Evolution of the Dress

Fashion has continually evolved in response to cultural, social, and technological changes, reflecting the values and aesthetics of each era. Today, fashion is more diverse and inclusive than ever, with styles influenced by a wide range of factors, including globalization, technology, and sustainability.



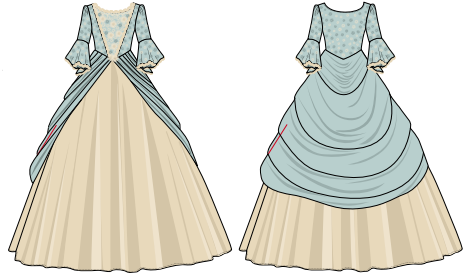
Ancient Civilizations
(Before 500 AD)



Middle Ages
(500-1500 AD)



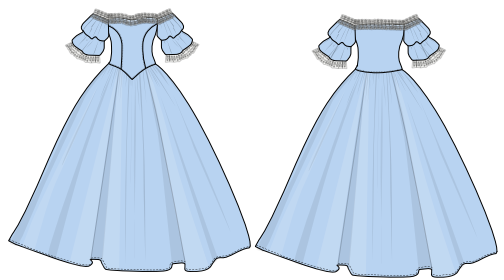
Renaissance
(14th-17th Century)



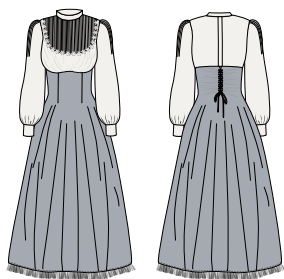
Baroque and Rococo
(17th-18th Century)



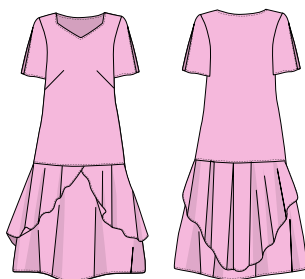
Regency and Empire
(Early 19th Century)



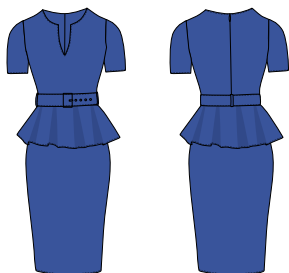
Victorian Era
(Mid-Late 19th Century)



Edwardian Era
(Late 19th-Early 20th Century)



1920s
(Roaring Twenties)



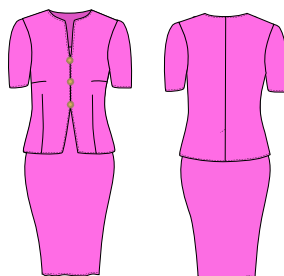
1930s
1940s



1950s
(Post-War Era)



1960s
1970s



1980s
1990s

2. DRESS LIFECYCLE

The lifecycle of a dress refers to the various stages it goes through, from its creation to its end use. Here are the main stages in the lifecycle of a dress:

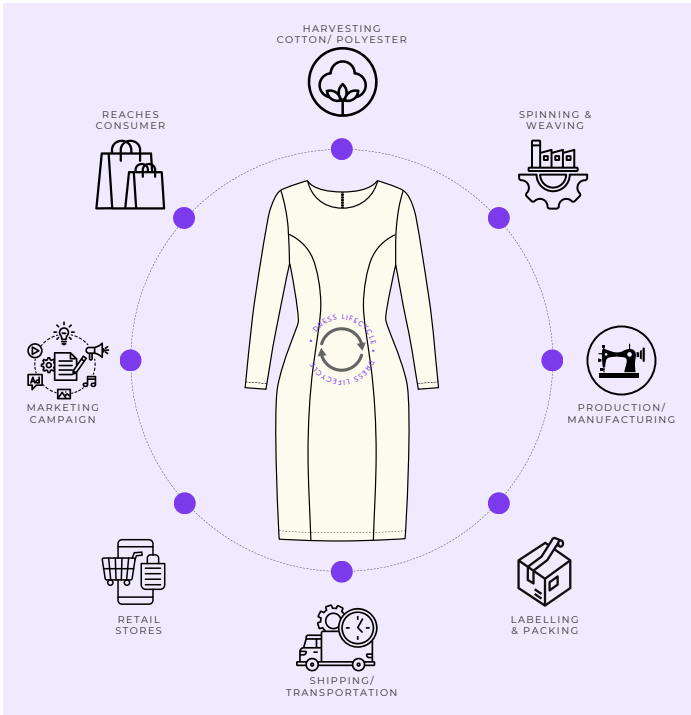


Figure 2 : Lifecycle of a Dress

Raw Materials Production: The life cycle begins with the production of raw materials, such as cotton, synthetic fibres, or blends, which are used to make the fabric for the dress.

Fabric Manufacturing: The raw materials are processed and woven into the fabric, which is then dyed and treated to achieve the desired colour and texture.

Garment Manufacturing: The fabric is cut and sewn into dresses in garment factories. This stage involves various processes, including cutting, stitching, and adding labels or embellishments.

Labelling & Packing: Labeling and packing are essential stages in the production and distribution of dresses, ensuring that the garments are properly identified, branded, and protected before reaching consumers.

Shipping: Dresses are then distributed or delivered from manufacturers to retailers or other businesses. It involves the transportation of dresses, either in bulk or individually, from one location to another.

Distribution and Retail: The finished dresses are distributed to retail stores or sold online, making them available to consumers.

Marketing: Marketing is a crucial aspect of the dress industry, encompassing a range of strategies and activities aimed at promoting, advertising, and selling dresses to target customers. Effective marketing helps dress brands and retailers connect with their audience, build brand awareness, and drive sales.

Consumer Use: Consumers purchase and wear dress, incorporating them into their daily wardrobes.

3. DRESS MANUFACTURING

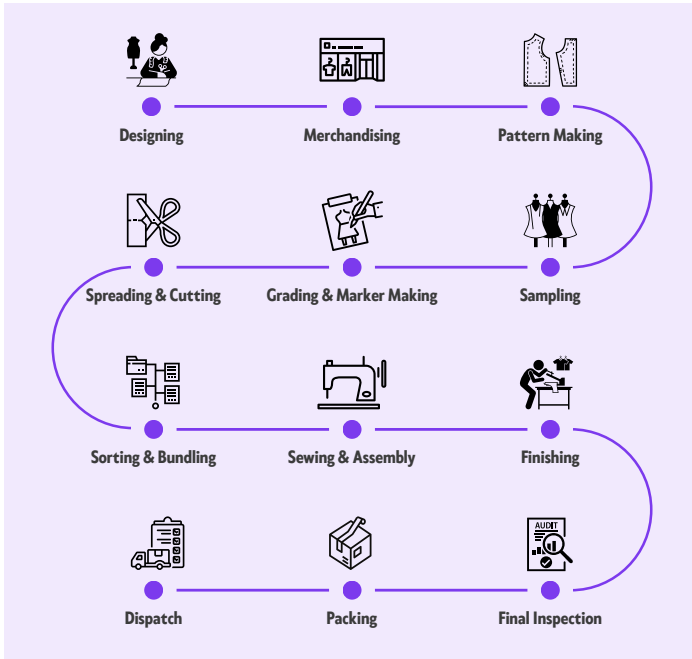


Figure 3 : Dress Manufacturing Process

Dress designing and manufacturing is a creative and dynamic process that involves various steps, from conceptualizing the design to producing the final product. Here's an overview of the key stages involved:

Design Conceptualization: The process begins with the creation of the dress design concept. Designers draw inspiration from current fashion trends, customer preferences, brand identity, and creative ideas. They sketch, create digital illustrations, or use graphic design software to visualize the design.

Material Selection: Once the design is finalized, the appropriate fabric and material are chosen. Cotton is the most common choice for dresses due to its softness and breathability, but other fabrics like polyester, blends, or speciality fabrics might also be used for specific purposes.

Pattern Making: Pattern makers create templates or patterns based on the approved design. These patterns are used as a guide for cutting the fabric to ensure consistency and accuracy during production.

Cutting and Printing: The fabric is cut based on the patterns, and any additional printing or embellishments are applied. Printing methods include screen printing, digital printing, sublimation, embroidery, and other techniques to transfer the design onto the fabric.

Sewing and Assembly: The cut fabric pieces are sewn together to assemble the dress. This involves stitching the shoulder seams, attaching sleeves, and sewing the side seams. For more complex designs, additional elements like pockets, zippers or embellishments might be incorporated.

Quality Control: Throughout the manufacturing process, quality control checks are performed to ensure that each dress meets the required standards in terms of fit, stitching, printing, and overall quality.

Packaging and Distribution: After production, the dresses are inspected, folded, packaged, and prepared for distribution. They are then distributed to retail stores or shipped to customers for online sales.

The realm of dress designing and manufacturing accommodates both small-scale operations in local boutique shops and large-scale productions in garment factories catering to national and international markets. This collaborative effort involving designers, pattern makers, cutters, printers, seamstresses, and quality control personnel culminates in the delivery of the final product, bringing joy and satisfaction to consumers across the globe.



PART 2:

NAVIGATING THROUGH
THE ELEMENTS OF A
DRESS

2.1

BASIC DRESS ANATOMY

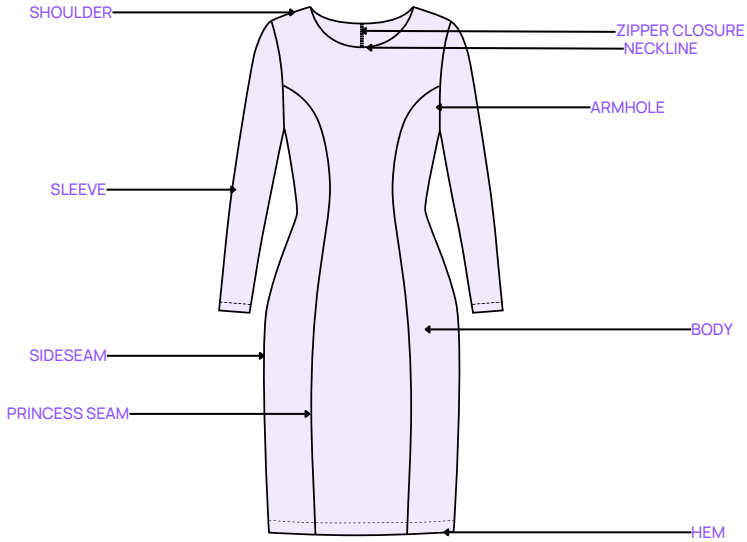


Figure 4 : Dress Anatomy

The anatomy of a dress refers to its different components and parts that make up the garment's overall structure and design. Understanding the dress anatomy is essential for designers, manufacturers, and consumers alike. Here are the key components of a typical dress:

Body: The body of the dress refers to the main fabric panel that covers the torso. It can be a single piece of fabric or consist of two front and back panels stitched together at the shoulders and sides.

Sleeves: Dress sleeves are the portions of the garment that cover the arms. The most common type of sleeve on a dress is short sleeves, but there are also dress with long sleeves or no sleeves (sleeveless/off-shoulder).

Neckline: The neckline is the opening at the top of the dress that goes around the neck. There are various types of necklines, including crew neck (round), V-neck, scoop neck, stylised, and more.

Hem: The hem is the finished edge of the fabric at the bottom of the dress, typically folded and stitched to prevent fraying.

Shoulders: The shoulder area refers to the part of the dress where the body and sleeves are connected. The seam that joins these sections is called the shoulder seam.

Side Seams: The side seams run vertically along the sides of the dress, connecting the front and back panels. Side seams give the garment its shape and structure.

Princess Seam: The princess seam is found in dresses, and are seams that run vertically from the shoulder or armhole down to the hem. Unlike traditional side seams, which are straight lines that run down the sides of the garment, princess seams are curved and follow the natural contours of the body.

Armhole: It refers to the opening or space in a garment where the sleeve is attached to the body. It's the opening through which your arm goes when you put on the garment.

Zipper Closure: A zipper closure is a fastening mechanism commonly used in garments, bags, and various other items to securely close openings. It consists of two parallel rows of interlocking teeth, one attached to each side of the opening, which can be joined together or separated by pulling a slider or tab along them.

2.2

DRESS SEAM CONSTRUCTION

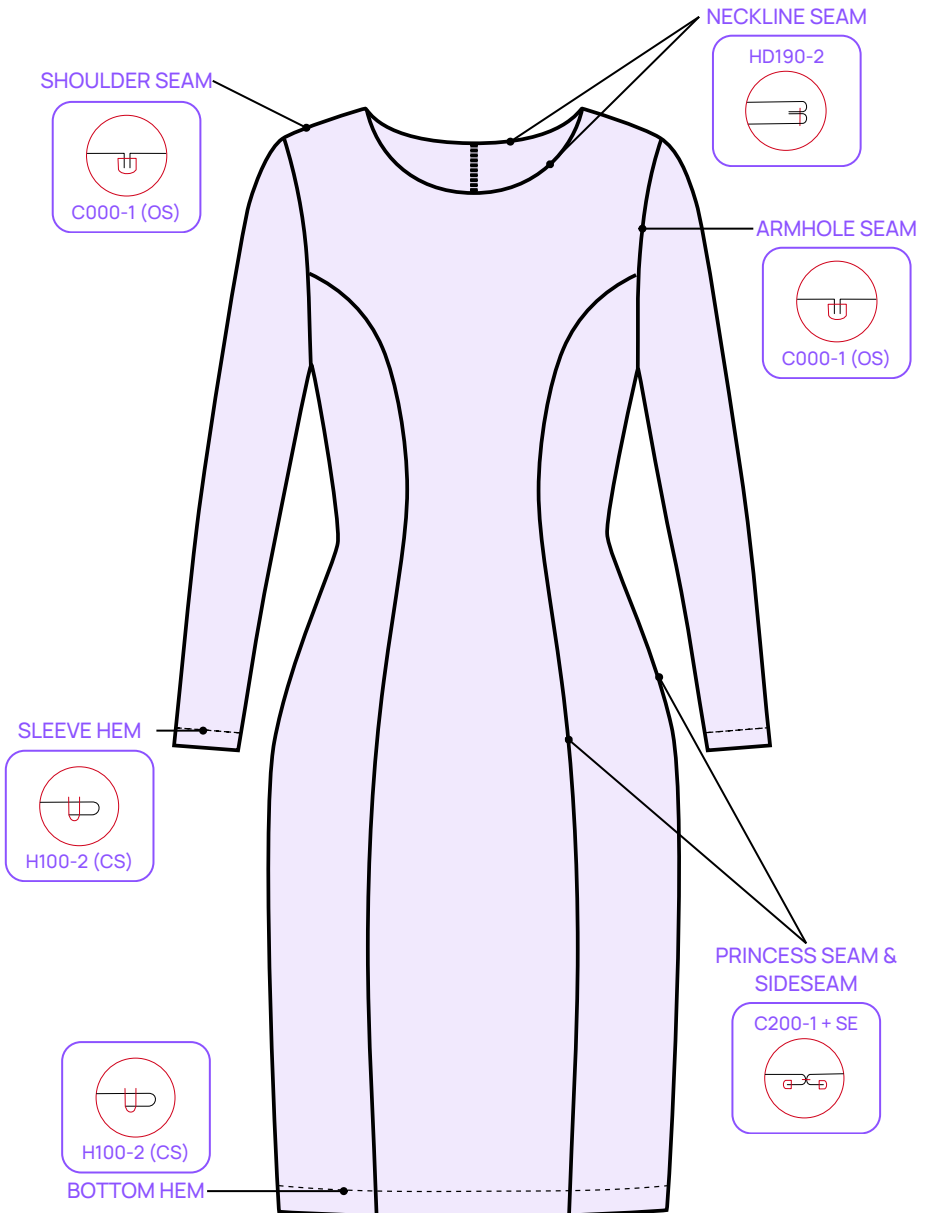
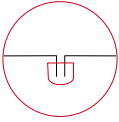


Figure 5 : Dress Seam Construction Details



C000-1 (OS)

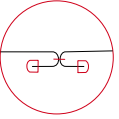
Repurpose Here >>>

It is a type of Basic Seam and is combined with an overlock stitch. It is commonly used on casual clothing at side seams and curved seams such as armholes. It is also used for bags and accessories.

The main properties of such seam types are:

- Resistance: Regular to good
- Versatility: Excellent
- Flexibility: Very good
- Elasticity: Good to Excellent
- Cost: Low

C200-1 + SE

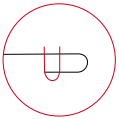


Repurpose Here >>>

It is a type of Open Seam and is combined with an overlock stitch and a serged edge. It is commonly used on medium and heavy-weight woven fabrics. It is also used for lined garments such as jackets and coats.

The main properties of such seam types are:

- Resistance: Regular to poor
- Versatility: Very good
- Flexibility: Excellent
- Elasticity: Good
- Cost: Regular



H100-2 (CS)

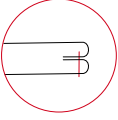
Repurpose Here >>>

It is a type of Double Fold Hem and is combined with a double topstitch and a cover stitch. It is commonly used on hems of most types of woven clothing and accessories like bottoms, t-shirts, shirts, casual tops, dresses, skirts, trousers, bags, shoes, accessories and curtains to name a few. It is also used for plackets, slits and pocket openings.

The main properties of such seam types are:

- Resistance: Good to very good
- Versatility: Very good
- Flexibility: Good
- Elasticity: Good
- Cost: Low

HD190-2



[Repurpose Here >>>](#)

It is a type of Sandwich Hem. It is commonly used on lined garments like bottoms, necklines, cuffs and sleeves. It is also used on reversible garments. The main properties of such seam types are:

- Resistance: Good to very good
- Versatility: Excellent
- Flexibility: Good
- Elasticity: Regular to poor
- Cost: Low

[View More Seams Here >>>](#)

2.3

DRESSES:

POINTS OF MEASUREMENT

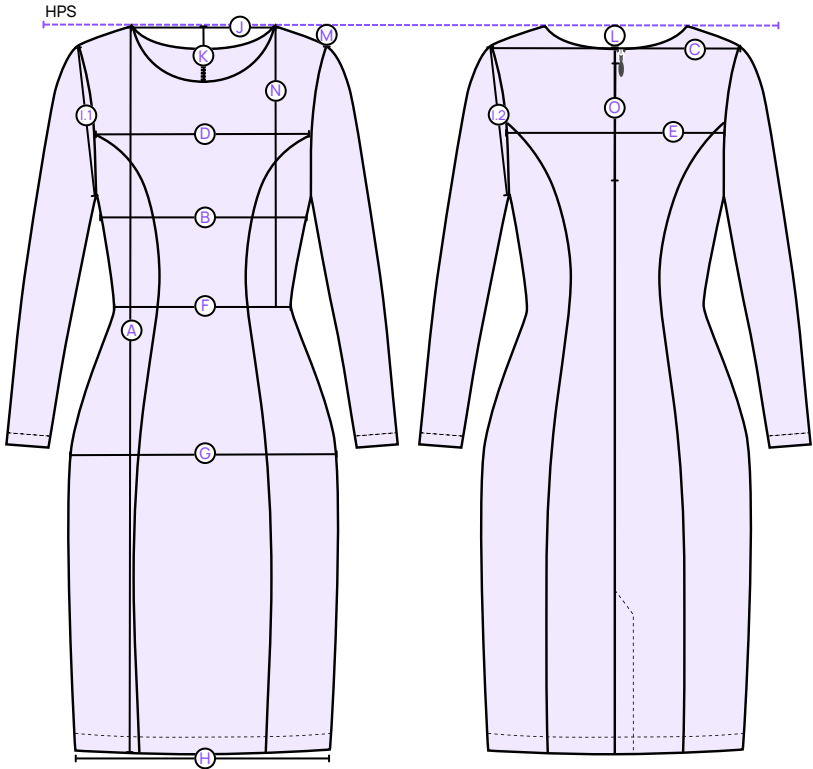


Figure 6 : Dress - Points of Measurement

A - Front Length (from HPS): Front length measurement is taken vertically from the high shoulder point (HPS) down to the intended point where the front hem of a garment will rest. This measurement provides crucial information about the length of the garment from the front, ensuring it achieves the desired length and fit.

B - Chest Width Circular (1" below AH): It refers to the measurement of the circumference of the chest taken approximately 1 inch below the armpit (AH). This measurement ensures that garments fit properly around the chest area.

C - Across Shoulder Width (@back): It is a measurement that determines the width of your shoulders from one shoulder seam to the other at the back of your body. This measurement is crucial for ensuring that clothing items such as blazers, jackets, and dresses with defined shoulder seams fit properly and comfortably.

D - Across Front Width: Across front measurement is taken horizontally across the front of a garment, usually from one underarm seam to the other underarm seam. This measurement point provides information about the width of the garment's front, especially around the chest or bust area.

E - Across Back Width: Across back measurement is taken horizontally across the back of a garment, typically from one armhole seam to the other armhole seam. This measurement point provides insight into the width of the garment's back, particularly across the shoulder blades.

F - Waist Width Circular: The "Waist Width Circular" measurement refers to the circumference of your waist. This measurement is taken by wrapping a measuring tape around your waist at its narrowest point.

G - Hip Width Circular: This refers to the measurement of the circumference around your hips. This measurement is taken around the widest part of your hip area. It's essential for selecting properly fitting pants, skirts, dresses, and other clothing items that need to accommodate your hip width.

H - Bottom Opening Width or Sweep: The "Bottom Opening Width" or "Sweep" measurement refers to the circumference around the bottom hem or opening of a garment, such as a skirt, dress, or flared pants. This measurement is important because it determines how wide the garment will be at its lower edge.

I - Armhole Depth Circumference: It is the measurement of the circumference around the armhole of a garment, typically taken for garments with sleeves, such as blouses, dresses, or tops. This measurement helps ensure that the armhole is the right size for your arm and that the garment is comfortable to wear.

J - Neck Width (@back): "Neck Width (@back)" is the measurement of the width of your neck at the back of your body. This measurement is typically used for garments such as shirts, blouses, dresses, and jackets to ensure a proper fit around the neck area.

K - Front Neck Depth (from HPS): "Front Neck Depth (from HPS)" refers to the measurement of the vertical depth of the neckline of a garment, starting from the High Point of the Shoulder (HPS) down to the desired point on the chest. This measurement is commonly used for dresses, tops, and other garments to determine how low or high the neckline will be.

L - Back Neck Depth: "Back Neck Depth" refers to the measurement of the vertical depth of the neckline at the back of a garment. This measurement is essential for garments such as dresses, blouses, tops, and other clothing items to determine how high or low the back neckline will be.

M - Shoulder Slope: Shoulder slope measurement is taken diagonally from the highest point of one shoulder down to the centre back neckline, usually following the slope of the shoulder. This measurement helps determine the angle at which the shoulder transitions into the neck area.

N - HPS to Mid Waist: "HPS to Mid Waist" is a measurement that indicates the vertical distance from the High Point of Shoulder (HPS) to the midpoint of your waist. This measurement is often used in dressmaking and tailoring to ensure that dresses and tops have the right proportions and fit around the waist area.

O - Zipper Length: This refers to the measurement of the total length of a zipper. This measurement is important when you need to select a zipper for a sewing project, replace a damaged zipper on clothing, or determine the appropriate zipper size for a garment.

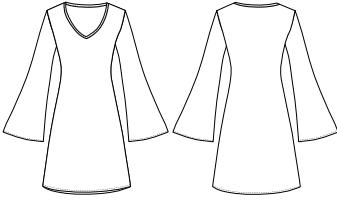


PART 3:

EXPLORING THE TYPES
OF DRESSES

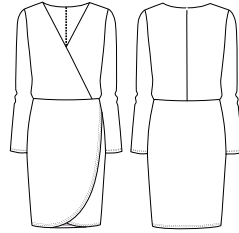
3.1

TYPES OF DRESSES-LENGTH:



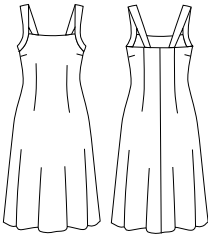
This dress style is very short, typically falling above the mid-thigh. It's often chosen for its youthful and playful look and is suitable for casual occasions.

Mini Dress



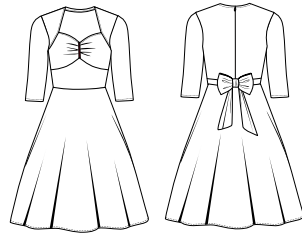
A dress that falls right around the knee or slightly above the knee. Knee-length dresses are versatile and can be worn in various settings.

Knee-Length Dress



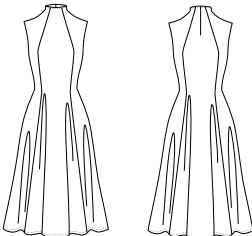
A dress that falls to the mid-calf, offering a timeless and modest length. Midi dresses are appropriate for a wide range of occasions.

Midi Dress



Slightly longer than a midi dress, a tea-length dress typically falls between the mid-calf and the ankle. It's an elegant choice for semi-formal events.

Tea-Length Dress



These are floor-length, reaching the ankles or even extending to the floor. Maxi dresses are often chosen for their bohemian or casual style.

Maxi Dress

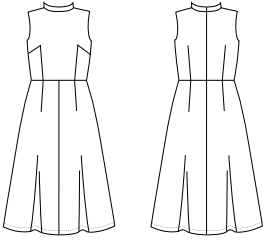


Full-length dresses (ball gowns) are the longest, often touching the floor and chosen for the most formal events, such as balls, galas, and weddings.

Full-Length or Ball Gown

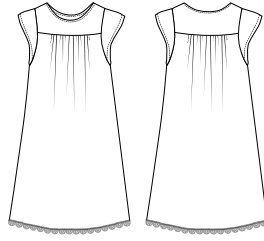
3.2

TYPES OF DRESSES-SLEEVELENGTH:



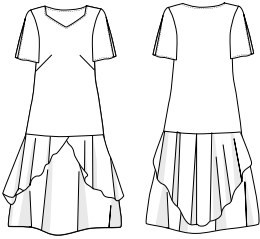
The sleeveless dresses have no sleeves and are perfect for warm weather or for layering with jackets and cardigans in winters.

Sleeveless Dress



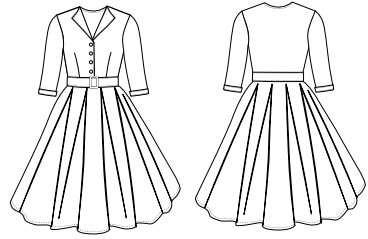
Cap sleeves dresses have very short sleeves that cover just the tops of the shoulders, providing a delicate and feminine look.

Cap Sleeve Dress



Short-sleeved dresses typically have sleeves that reach above or slightly below the elbow. They are a versatile choice for various occasions.

Short Sleeve Dress



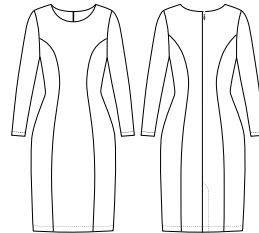
Dresses with elbow-length sleeves extend to the elbows, providing more coverage while still being comfortable for warm weather.

Elbow-Length Sleeve Dress



Sleeves reach between the elbow and the wrist, offering moderate coverage and making them suitable for both casual and semi-formal events.

Three-Quarter Sleeve Dress



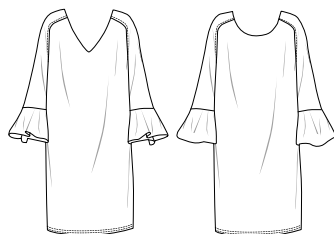
Long-sleeved dresses have sleeves that extend to the wrists. They are ideal for cooler weather and formal occasions.

Long Sleeve Dress



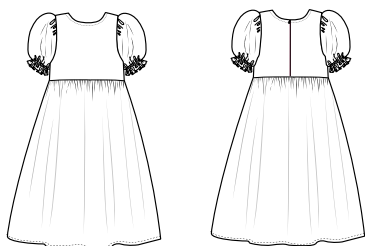
Bishop sleeve dresses have loose-fitting sleeves that gather at the wrist, creating a voluminous and dramatic effect.

Bishop Sleeve Dress



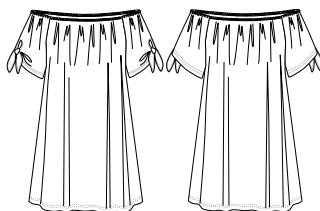
Bell sleeves flare out from the elbow or mid-arm, resembling the shape of a bell. They add a touch of bohemian or retro style to a dress.

Bell Sleeve Dress



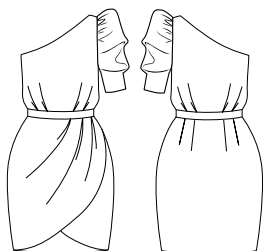
Puff sleeve dresses have sleeves with extra fabric at the shoulders. Puff sleeves can create a trendy and romantic look.

Puff Sleeve Dress



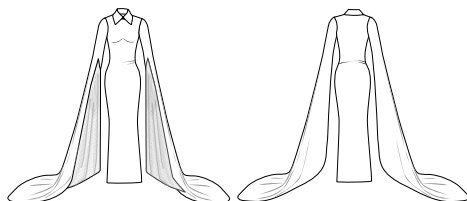
Off-shoulder dresses feature sleeves that rest below the shoulders, leaving the shoulders and upper chest exposed for a flirty and alluring look.

Off-Shoulder Dress



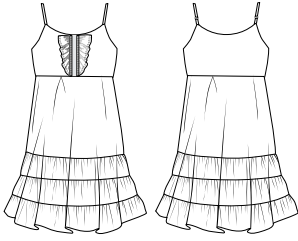
One-shoulder dresses have a single sleeve, leaving one shoulder bare, and they can be elegant and modern. Often used for parties.

One-Shoulder Dress



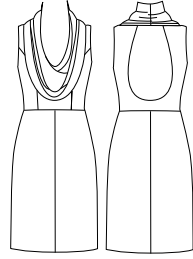
Cape sleeve dresses have a dramatic style sleeve with additional fabric that drapes from the shoulders, creating a cape-like effect.

Cape Sleeve Dress



Spaghetti strap dresses feature very thin straps and are perfect for hot weather or as a base for layering under jackets.

Spaghetti Strap Dress



Halter neck dresses have a strap that wraps around the neck, leaving the shoulders and upper back exposed. Mostly seen on casual/party dresses.

Halter Neck Dress

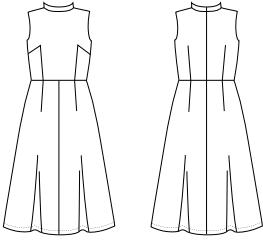


Cold shoulder dresses have cut-out or open sections at the shoulders, adding a trendy and edgy touch to the dress. Mostly seen on casual/party dresses.

Cold Shoulder Dress

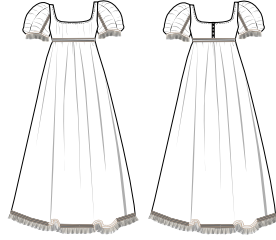
3.3

TYPES OF DRESSES-WAISTLINE:



Features a waistline that rests at the natural waist. It creates a classic, hourglass silhouette and is often seen in A-line and ball gown styles.

Natural Waist Dress



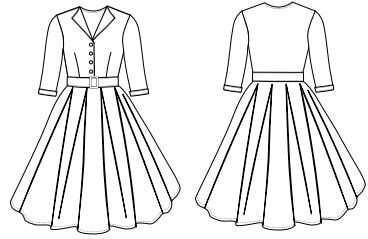
Empire waist dresses have a high waistline that sits just below the bust. The skirt flows from this raised waistline, making it a flattering choice.

Empire Waist Dress



Dropped waist dresses have a waistline that falls below the natural waist, often around the hips or lower. This style creates an elongated silhouette.

Dropped Waist Dress



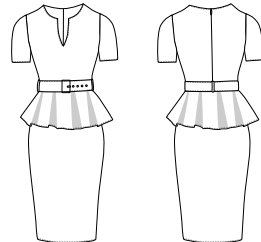
These dresses come with a belt or sash that can be tied or cinched at the waist to create definition and accentuate the waistline.

Belted Waist Dress



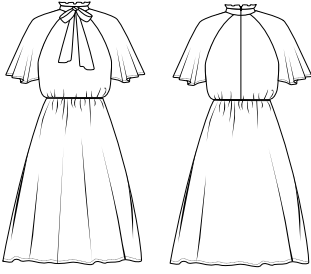
Feature a fitted bodice with lacing or boning that creates a structured and cinched waistline and is associated with Victorian or formal wear.

Corset Waist Dress



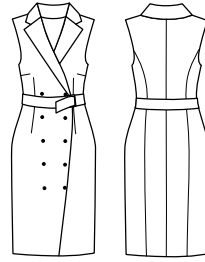
Peplum waist dresses incorporate a flared or gathered piece of fabric at the waist, creating a peplum effect. Adds a feminine & flattering touch to the dress.

Peplum Waist Dress



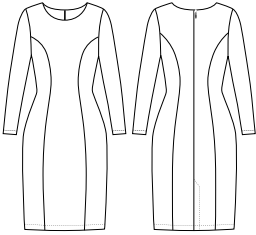
Dresses with an elasticized waist have a stretchy band that provides comfort and flexibility. They are often seen in casual and bohemian styles.

Elasticized Waist Dress



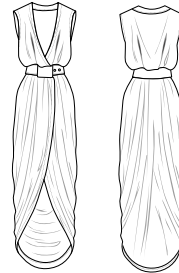
Wrap waist dresses have a front closure with a wrap that can be tied or secured with a belt, creating a V-neckline and a cinched waist.

Wrap Waist Dress



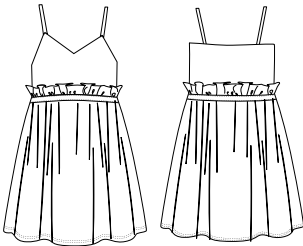
These have seams that flow vertically from the shoulder to the hem, creating a long & elegant appearance. They are often used in formal and bridal gowns.

Princess Waist Dress



Ruching or gathering at the waistline creates a textured and gathered effect, adding dimension to the dress and concealing imperfections.

Ruched Waist Dress

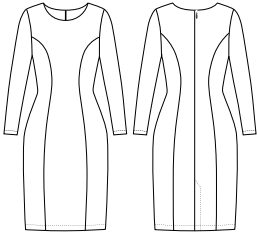


This style features a cinched, gathered, or ruffled waist that resembles a scrunched paper bag. It's a trendy and playful choice for casual dresses.

Paper Bag Waist Dress

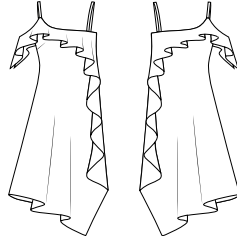
3.4

TYPES OF DRESSES-HEMLINE:



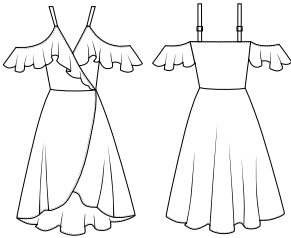
This dress features a hemline that is straight across, creating a clean and simple look. It's a classic choice for both casual and formal occasions.

Straight Hem



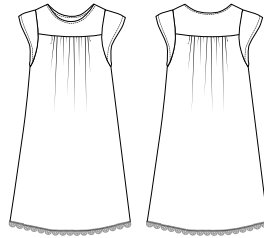
Asymmetrical hemlines are characterized by uneven or diagonal hems, where one side is longer than the other.

Asymmetrical Hem Dress



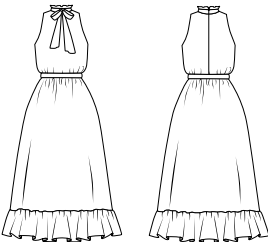
High-low dresses have a hemline that is shorter in the front and longer in the back, creating a dynamic and trendy look.

High-Low Hem Dress



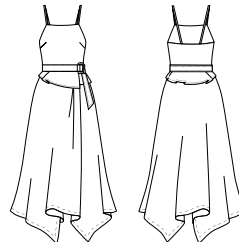
Scalloped hems feature a wavy or curved edge, resembling the shape of scallop shells and are often seen in summer dresses.

Scalloped Hem Dress



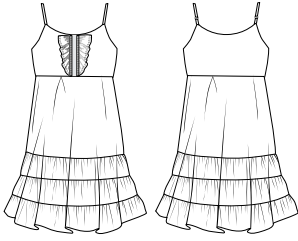
Adorned with layers of ruffles or frills at the bottom, they create a playful and whimsical appearance and are found in sundresses and bohemian styles.

Ruffled Hem Dress



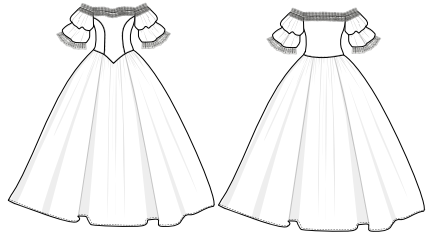
The handkerchief hemline resembles a handkerchief. It adds a flowy and romantic touch to the dress and is often seen in maxi or beach dresses.

Handkerchief Hem Dress



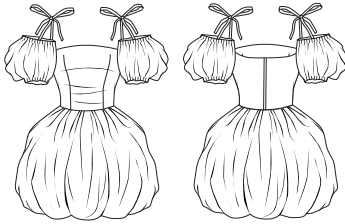
Features multiple horizontal layers or tiers of fabric at the bottom of dress. Adds volume & movement, making it suitable for casual & formal occasions.

Tiered Hem Dress



Bouffant hems have a full, puffy, or gathered appearance at hem, creating dramatic and voluminous effects, seen in ball gowns & formal dresses.

Bouffant Hem Dress

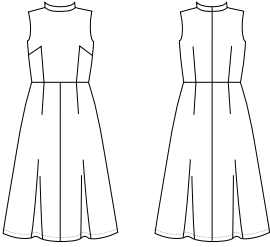


Bubble hems feature a gathered or cinched hemline, creating bubble-like shape. It's playful and can be found in both casual and formal dresses.

Bubble Hem Dress

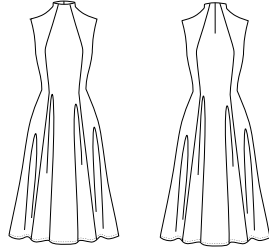
3.5

TYPES OF DRESSES-OVERALL:



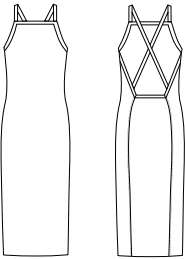
A shift dress is a classic and versatile garment characterized by its straight silhouette and lack of defined waistline.

Shift Dress



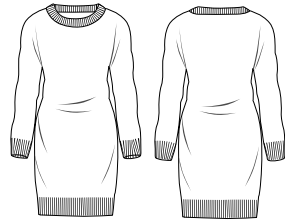
An A-line dress is a classic and versatile garment characterized by its silhouette, which resembles the letter "A".

A-line Dress



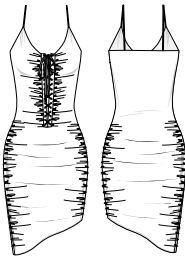
A sheath dress is a sleek and form-fitting garment characterized by its close-fitting silhouette that follows the natural curves of the body.

Sheath Dress



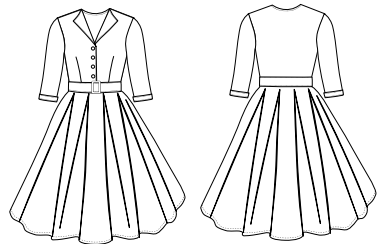
A sweater dress is a cozy and stylish garment crafted from knit fabric, designed to be worn during cooler weather.

Sweater Dress



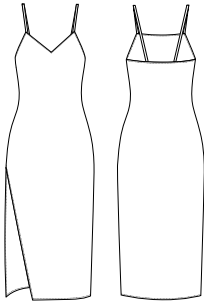
A pencil dress, is a sleek and sophisticated garment characterized by its slim, form-fitting silhouette that follows the contours of the body.

Pencil Dress



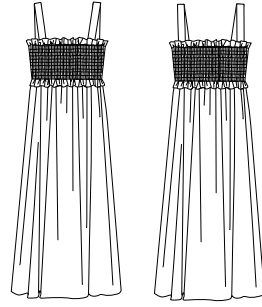
A skater dress is a versatile and flattering garment characterized by its fitted bodice and flared skirt, reminiscent of figure skating costumes.

Skater Dress



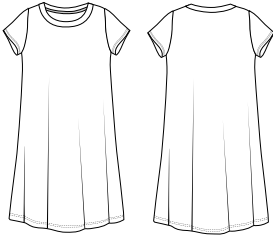
A slip dress is a sleek and minimalistic garment inspired by the classic slip or chemise worn as innerwear.

Slip Dress



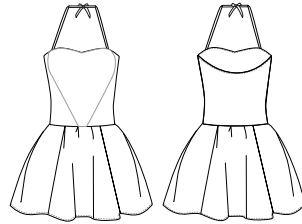
A smock dress is a loose-fitting and comfortable garment characterized by its relaxed silhouette and gathered or pleated detailing.

Smock Dress



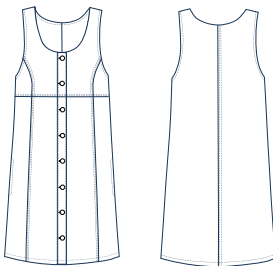
A t-shirt dress is a casual and comfortable garment inspired by the classic t-shirt design, but elongated into a dress length.

T-shirt Dress



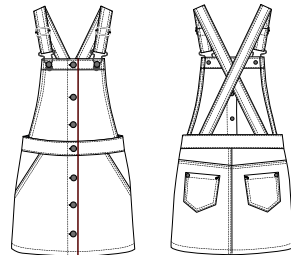
It is a semi-formal garment designed to be worn for evening events, parties, or other social occasions that require a touch of elegance.

Cocktail Dress



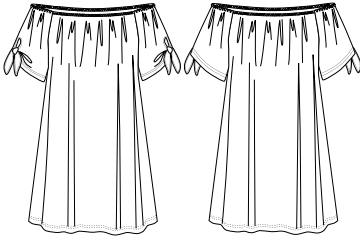
A denim dress is a stylish and versatile garment made from denim fabric, typically associated with the classic blue jeans material.

Denim Dress



A pinafore dress is a versatile and playful garment characterized by its sleeveless design with wide shoulder straps and a bib front.

Pinafore Dress



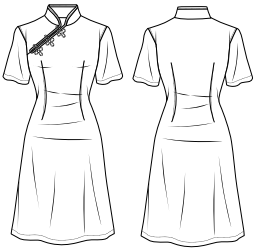
A Bardot dress, is a stylish garment characterized by its neckline, which sits off the shoulders, exposing the collarbones and upper chest area.

Bardot Dress



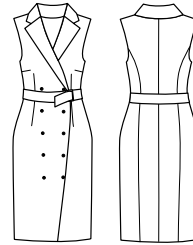
Also known as a strapless dress or bandeau dress, is a sleek and stylish garment characterized by its strapless design and form-fitting silhouette.

Tube Dress



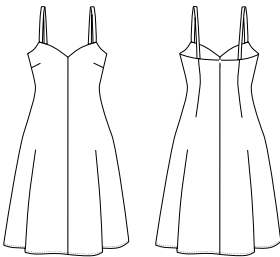
Also known as a cheongsam, is a traditional Chinese garment characterized by its form-fitting silhouette, high collar, and side slits.

Qipao Dress



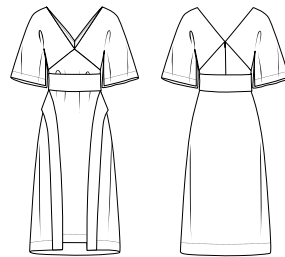
A blazer dress is a sophisticated and chic garment that combines elements of a tailored blazer with the silhouette of a dress.

Blazer Dress



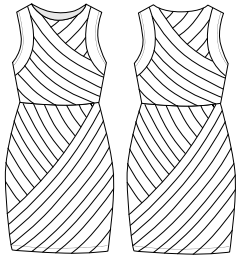
A sundress is a lightweight and casual dress designed to be worn during warm weather, typically featuring a relaxed and breezy silhouette.

Sun Dress



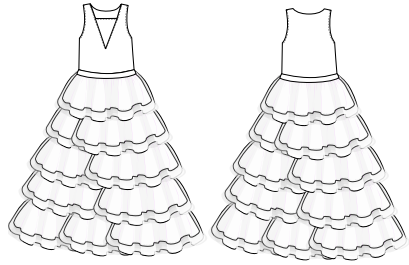
A kimono dress is a stylish fusion of traditional Japanese kimono design elements with contemporary Western dress styles.

Kimono Dress



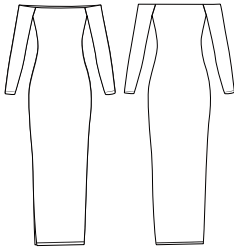
It is a sleek and figure-hugging garment constructed from stretchy bandage fabric, typically made from a blend of rayon, nylon, and spandex.

Bandage Dress



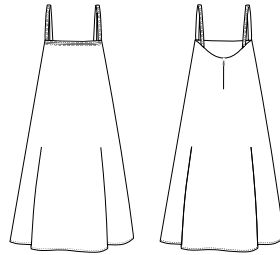
It is an elegant garment made from tulle fabric, a lightweight and sheer material commonly used in formalwear and special occasion dresses.

Tulle Dress



A bodycon dress, short for "body-conscious," is a form-fitting garment designed to hug the body closely, emphasizing curves and contours.

Bodycon Dress



A tent dress is a loose-fitting garment characterized by its straight silhouette that resembles the shape of a tent, allowing for ease of movement.

Tent Dress



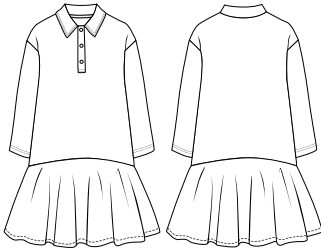
It is a stylish garment distinguished by a fitted bodice that extends seamlessly into a decorative or functional yoke across the shoulders or upper chest.

Yoke Dress



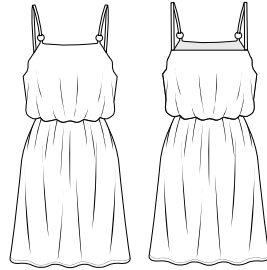
A dirndl dress is a traditional Bavarian and Austrian garment known for its iconic design, featuring a fitted bodice, full skirt, and apron.

Dirndl Dress



A tunic dress is a versatile and comfortable garment that combines the relaxed fit of a tunic top with the length of a dress.

Tunic Dress



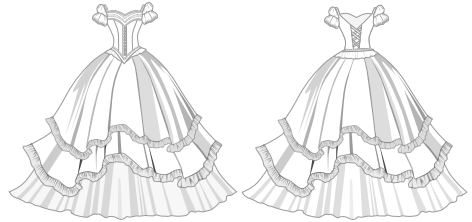
It has a loose and billowy bodice that is gathered or cinched at the waist, creating a blousy effect, contrasting with a fitted skirt.

Blouson Dress



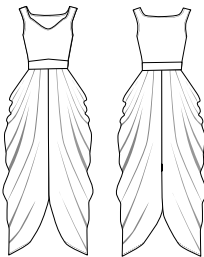
A peasant dress is a loose, flowy garment with billowy sleeves, a square or scoop neckline, and often features gathered or ruffled detailing.

Peasant Dress



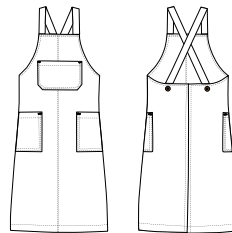
A debutante dress is a formal gown worn by young women, typically aged 16 to 21, for their debut into society or debutante ball.

Debutante Dress



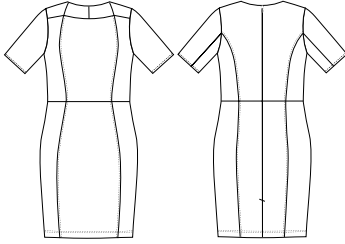
A harem dress, also known as a harem or genie dress, is a unique and exotic garment inspired by traditional Middle Eastern and Asian attire.

Harem Dress



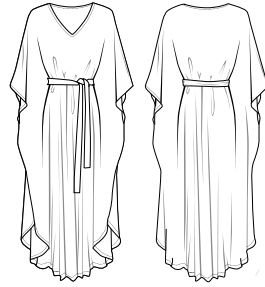
An apron dress is a versatile and practical garment that draws inspiration from traditional aprons worn for cooking or household chores.

Apron Dress



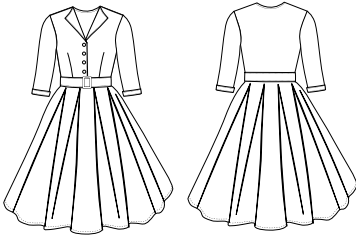
A panelled dress is a garment constructed with multiple fabric panels stitched together to create a structured or fitted silhouette.

Panelled Dress



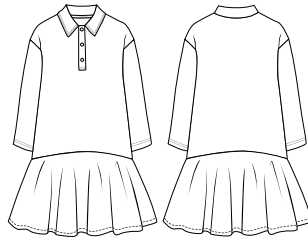
A kaftan dress is a loose, flowy garment characterized by its relaxed silhouette and typically features wide sleeves and a wide, often V-neckline.

Kaftan Dress



A fit and flare dress is defined by its fitted bodice that accentuates the waist and flared skirt that creates an "a" shape silhouette.

Fit & Flare Dress



A polo dress is a versatile and stylish garment that combines elements of a traditional polo shirt with the silhouette of a dress.

Polo Dress



PART 4:

DIVING INTO
REPSKETCH'S
COMPONENT LIBRARY

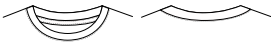
4.1

NECKLINES

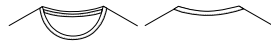
Dress necklines are a pivotal design element that can transform the entire look and feel of a garment. They range from classic choices like V-necks and crew necks, which offer simplicity and timelessness, to more daring options like plunging and off-shoulder necklines that exude boldness and sensuality. Whether it's the romantic allure of a sweetheart neckline, the chic sophistication of a boat neck, or the edgy charm of a one-shoulder style, each neckline imparts a unique character to a dress. Necklines not only dictate the dress's formality but also play a crucial role in framing the face and enhancing a woman's silhouette, making them a key factor in personal style and the choice of attire for various occasions. From elegant evening gowns to casual sundresses, the neckline is a focal point of dress design, offering a canvas for creativity and self-expression in the world of fashion. The following are some of the most popular dress neckline styles:

1. BASIC NECKLINES

This is the most common type of pocket found on Dresses. It is a simple, flat pocket made from a separate piece of fabric that is stitched onto the front of the shirt. Patch pockets can be square, rectangular, or even rounded in shape.



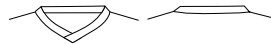
Crew Neck



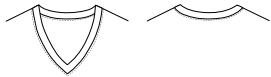
Scoop Neck



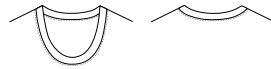
V-Neck



Overlap V-Neck



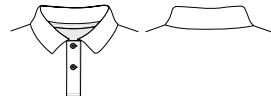
Deep V-Neck



Deep Scoop Neck



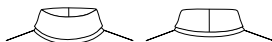
Henley Neck



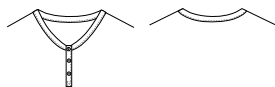
Polo Neck



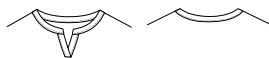
Boat Neck



Turtle Neck



V-Neck Henley



Notch Neck



Hood Neck



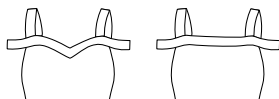
Cowl Neck

2. STYLISED NECKLINES

Stylized necklines, on the other hand, refer to necklines that are creatively designed to add unique and eye-catching elements to a garment. These necklines are often used to make a fashion statement or create a distinctive look. Stylized necklines can take various forms, including:



Neckline 01



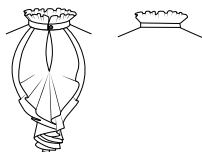
Neckline 02



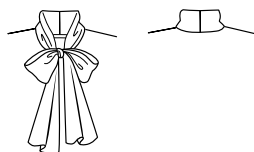
Neckline 03



Neckline 04



Neckline 05



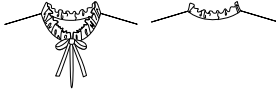
Neckline 06



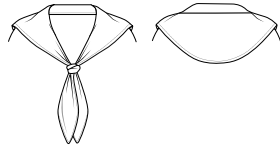
Neckline 07



Neckline 08



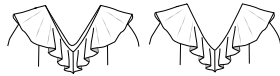
Neckline 09



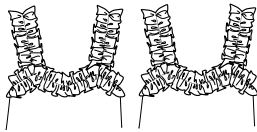
Neckline 10



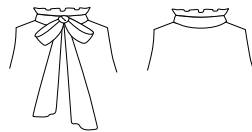
Neckline 11



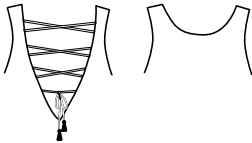
Neckline 12



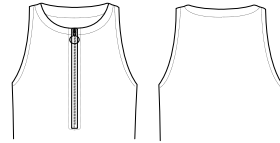
Neckline 13



Neckline 14



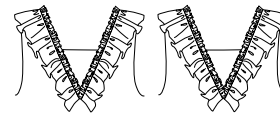
Neckline 15



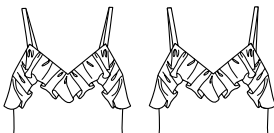
Neckline 16



Neckline 17



Neckline 18



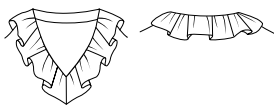
Neckline 19



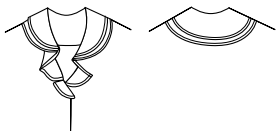
Neckline 20



Neckline 21



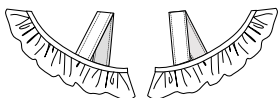
Neckline 22



Neckline 23



Neckline 24



Neckline 25



Neckline 26

4.2

SLEEVES

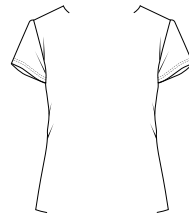
Dress sleeves play a crucial role in defining the style and character of a garment. They come in a variety of lengths and designs, each offering a distinct look. Short sleeves, for instance, provide a casual and breezy feel, perfect for summer dresses, while long sleeves are ideal for cooler seasons, offering warmth and elegance. Three-quarter sleeves strike a balance, providing coverage while allowing the wrists to shine with accessories. Bell sleeves exude a touch of bohemian charm with their flared design, while cap sleeves offer a dainty, feminine look. Additionally, off-the-shoulder and cold-shoulder sleeves provide a flirtatious, shoulder-baring option. The choice of sleeves can transform a dress, making it suitable for casual outings, formal events, or anything in between, showcasing the endless possibilities of fashion design.

1. BASIC SLEEVES

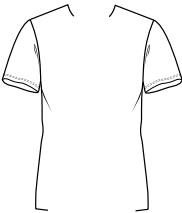
Basic sleeves refer to traditional, straightforward sleeve designs that are timeless and versatile. These sleeves are commonly found in a wide range of garments and are suitable for various occasions. Some common types of basic sleeves include:



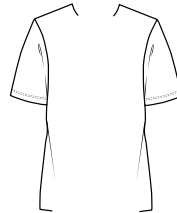
Sleeveless



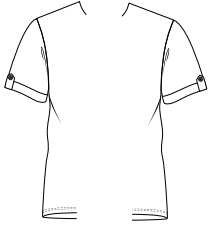
Cap Sleeves



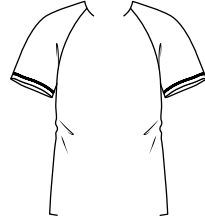
Short Sleeves



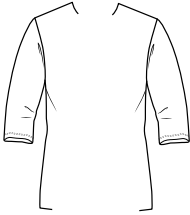
Elbow Length Sleeves



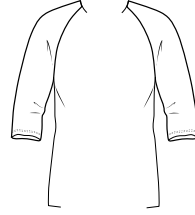
Sleeves with Tab



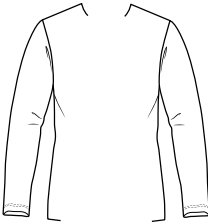
Short Raglan Sleeves



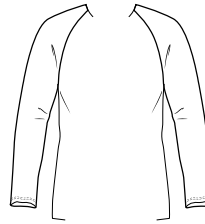
3/4th Sleeves



3/4th Raglan Sleeves



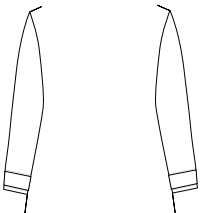
Long Sleeves



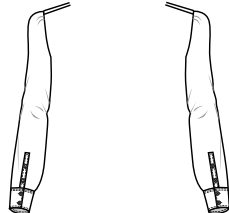
Long Raglan Sleeves

2. STYLISTED SLEEVES

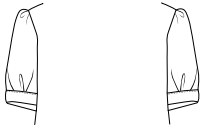
Stylized sleeves, on the other hand, encompass creative and unique sleeve designs that are meant to make a fashion statement. These sleeves often incorporate various embellishments, cuts, and shapes to add character and drama to a garment. Stylized sleeves include:



Sleeve 01



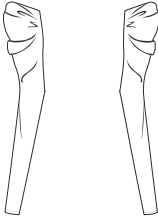
Sleeve 02



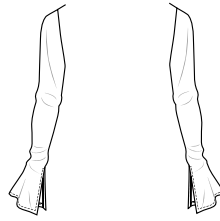
Sleeve 03



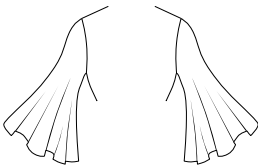
Sleeve 04



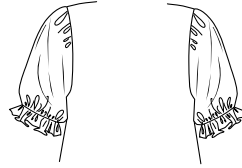
Sleeve 05



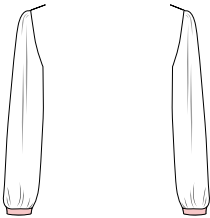
Sleeve 06



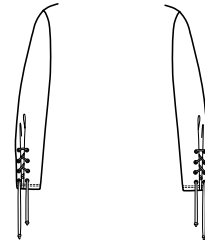
Sleeve 07



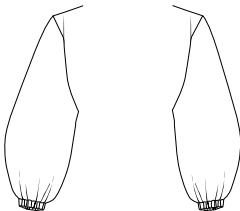
Sleeve 08



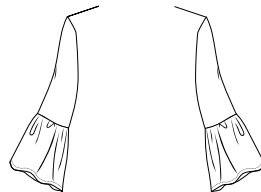
Sleeve 09



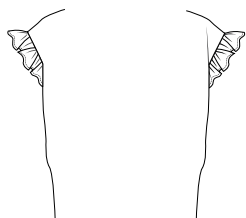
Sleeve 10



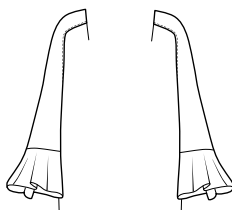
Sleeve 11



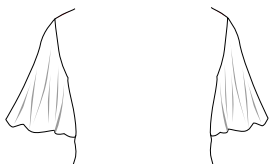
Sleeve 12



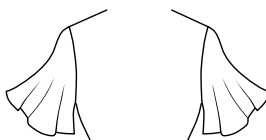
Sleeve 13



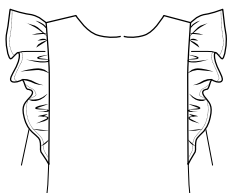
Sleeve 14



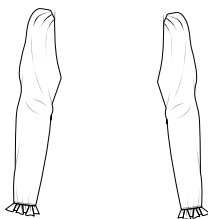
Sleeve 15



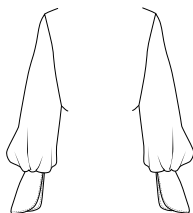
Sleeve 16



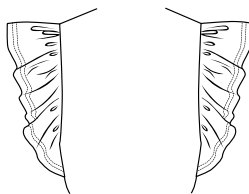
Sleeve 17



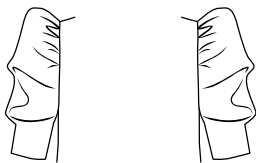
Sleeve 18



Sleeve 19



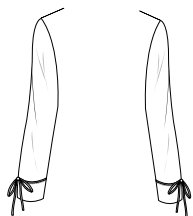
Sleeve 20



Sleeve 21



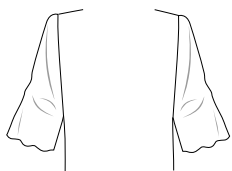
Sleeve 22



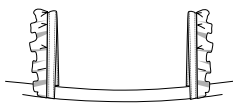
Sleeve 23



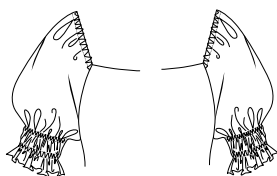
Sleeve 24



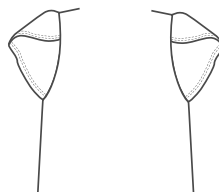
Sleeve 25



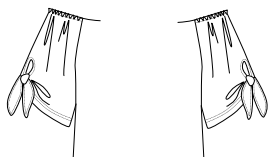
Sleeve 26



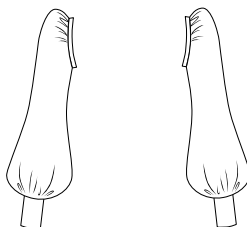
Sleeve 27



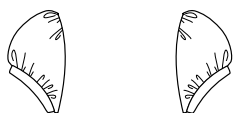
Sleeve 28



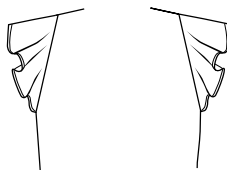
Sleeve 29



Sleeve 30



Sleeve 31



Sleeve 32

4.3

POCKETS AND FLAPS

1. PATCH POCKETS

This is the most common type of pocket found on Dresses. It is a simple, flat pocket made from a separate piece of fabric that is stitched onto the front of the dress. Patch pockets can be square, rectangular, or even rounded in shape.



Rounded Patch Pocket



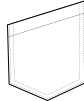
Pointed Patch Pocket



Round Patch Pocket



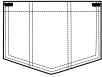
Square Patch Pocket



Angular Patch Pocket



Pleated Patch Pocket



Patch Pocket with DNLS

2. FLAPS AND WELTS

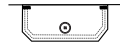
Flaps and welts are two different elements often found on pocket designs, especially on jackets, dresses, and trousers. They serve both functional and decorative purposes.



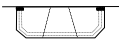
Single Welt



Double Welt



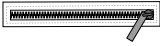
Flap with Button



Basic Flap

3. ZIPPERED POCKET

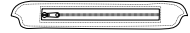
Some Dresses may feature a zippered pocket, usually on the chest or side. These pockets offer added security and are suitable for storing small valuables like keys, cards, or money.



Zipper Welt Pocket



Dummy Pocket & Zipper



Flap Pocket 03

4. FLAP POCKETS

Flap pockets have a fabric flap that covers the pocket opening. The flap is often secured with buttons, snaps, or Velcro. This type of pocket is commonly seen on utility-style or military-inspired Dresses.



Flap Pocket 01



Flap Pocket 02



Flap Pocket 03



Flap Pocket 04



Flap Pocket 05



Flap Pocket 06



Flap Pocket 07

5. KANGAROO POCKETS

This type of pocket is often found on hooded dresses. It is a large, front-facing pocket that is usually stitched to the lower front of the shirt, and it has openings on both sides, creating a pouch-like design.



Kangaroo Pocket



Ribbed Kangaroo Pocket

4.4

BUTTONS

1. FLAT BUTTON

These are the most traditional and common buttons, with a flat surface and two or four sewing holes. They come in various materials, including plastic, wood, metal, and fabric-covered options, providing a versatile and practical choice for a wide range of clothing items.



Round Button



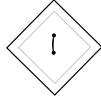
2 Hole Round Button



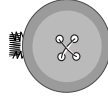
4 Hole Round Button



Fish-eye Round Button



2 Hole Square Button



Button with Buttonhole

2. SNAP BUTTON

Also known as press studs or poppers, snap buttons consist of two interlocking discs. When pressed together, they securely fasten the garment.



Snap Button 01



Snap Button 02



Snap Button 03

3. SHANK BUTTON

Shank buttons have a small loop or shank on the back instead of sewing holes. The shank provides extra space between the button and the fabric, adding decorative elements on the button's front.



Shank Button 01



Shank Button 02

4.5

ZIPPER PULLERS

Zipper pullers, also known as zipper pulls or zipper sliders, are tiny attachments that help with zipper opening and closing. They are used to hold and operate the slider along the zipper teeth, allowing for effortless and smooth movement. Zipper pullers are available in a variety of forms, sizes, and materials, and they may be used for both functional and ornamental purposes.



Zipper Puller 01



Zipper Puller 02



Zipper Puller 03



Zipper Puller 04



Zipper Puller 05



Zipper Puller 06



Zipper Puller 07



Zipper Puller 08



Zipper Puller 09



Zipper Puller 10



Zipper Puller 11



Zipper Puller 12



Zipper Puller 13



Zipper Puller 14

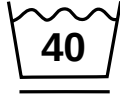
4.6

WASHCARE SYMBOLS

Wash care symbols are standardized pictograms used on clothing labels to provide care instructions for the proper washing, drying, and ironing of garments. These symbols help consumers understand how to care for their clothes, ensuring they remain in good condition and last longer. Here are some common wash care symbols and their meanings:



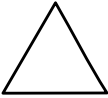
Wash at 30°C



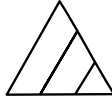
Wash at 40°C



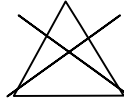
Do Not Wash



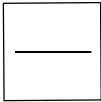
Bleach



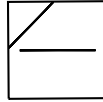
Non-Chlorine Bleach



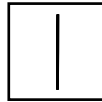
Do Not Bleach



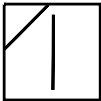
Flat Dry



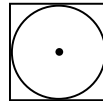
Flat Dry in Shade



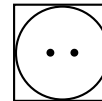
Drip Dry



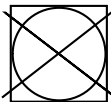
Drip Dry in Shade



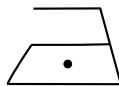
Tumble Dry, Low Temp.



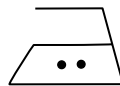
Tumble Dry, Med. Temp.



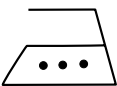
Do Not Tumble Dry



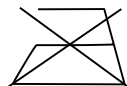
Iron, Low Temp.



Iron, Medium Temp.



Iron, High Temp.

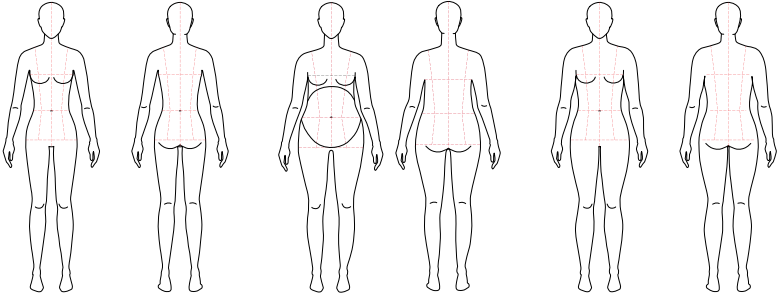


Do Not Iron

4.7

CROQUIS

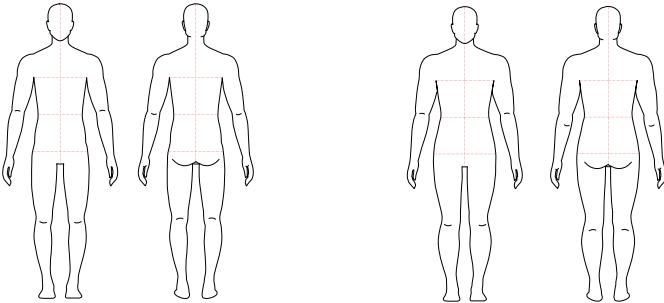
Croquis (pronounced kroh-kee) is a simple sketch of a human form that is used as a template for designing garment designs. Croquis are often extended and simplified, indicating a fashion model's idealised proportions. They are used by fashion designers to visualise and produce their garment designs.



Women Croqui

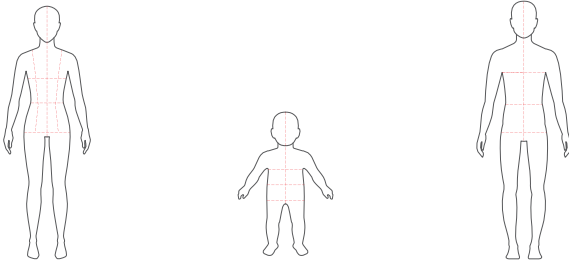
Pregnant Women Croqui

Women Plus Size Croqui



Men Croqui

Men Plus Size Croqui



Young Girl Croqui

Toddler Croqui

Young Boy Croqui

4.8

GRAPHICS, LOGOS & PATTERNS

The visual designs, logos, and patterns that adorn dresses play a crucial role in defining their overall aesthetic and conveying various messages. These elements, collectively referred to as dress graphics, can be applied through printing, embroidery, or other techniques to enhance the style and personality of the garment.

Dress graphics encompass a wide range of designs, from intricate patterns and illustrations to bold logos and text. They serve multiple purposes, including:

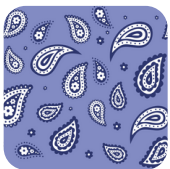
Enhancing Style: Dress graphics add visual interest and elevate the overall style of the garment. Whether featuring vibrant colors, intricate motifs, or modern designs, graphics contribute to the dress's unique and fashionable appearance.

Expressing Individuality: Just as with T-shirt graphics, dress graphics offer individuals a platform to express their personality, interests, and creativity. Whether it's showcasing a favorite hobby, depicting a beloved animal, or displaying an artistic illustration, dress graphics allow wearers to make a statement and stand out from the crowd.

Promoting Brands or Events: Dress graphics often include logos, slogans, or imagery that promote brands, events, or causes. These graphics serve as powerful marketing tools, helping to raise awareness and generate interest in specific brands or events.

Conveying Messages: Dress graphics can also convey social, cultural, or political messages. Whether advocating for environmental conservation, promoting inclusivity, or expressing solidarity with a particular movement, graphics on dresses serve as a medium for communication and activism.

Dress graphics have become an integral part of fashion, offering wearers a means to express themselves creatively and connect with others who share similar interests or beliefs. They play a vital role in shaping the identity of the garment and contributing to the wearer's overall sense of style and individuality.



Graphic 01



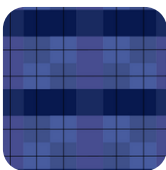
Graphic 02



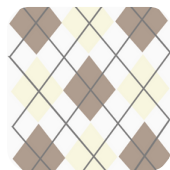
Graphic 03



Graphic 04



Graphic 05



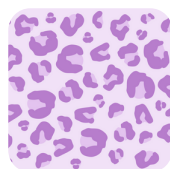
Graphic 06



Graphic 07



Graphic 08



Graphic 09



Graphic 10



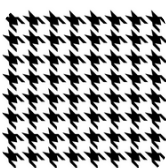
Graphic 11



Graphic 12



Graphic 13



Graphic 14



Graphic 15



Graphic 16



Graphic 17



Graphic 18



Graphic 19



Graphic 20



Graphic 21



Graphic 22



Graphic 23



Graphic 24



Graphic 25



Graphic 26



Graphic 27



Graphic 28



Graphic 29



Graphic 30

[Repurpose More Graphics Here >>>](#)



PART 5:

UNVEILING INDUSTRY-
READY TECHNICAL
SKETCHES TAILORED
FOR TECHPACKS

5.1

WHAT IS A TECHPACK?

A tech pack, short for "technical package," is a comprehensive document used in the fashion industry to communicate design details and specifications to manufacturers and production teams. It serves as a bridge between the creative design concept and the actual production process, ensuring that the design vision is accurately translated into a physical garment. Here's all you need to know about tech packs:

1. COMPONENTS OF A TECH PACK

Design Overview: Includes sketches, images, or descriptions of the garment's front and back, as well as any design variations.

Technical Drawings: Detailed flat sketches of the garment, showcasing its various components, proportions, and measurements.

Materials: Lists the fabrics, trims, buttons, zippers, and any other components that will be used in the garment.

Measurements: Precise measurements for various points of the garment, such as length, width, and circumference.

Construction Details: Instructions on how the garment should be assembled, including seam types, stitching details, and any additional features.

Grading: Information on how the garment should be scaled to different sizes, ensuring consistency in proportions across various sizes.

Labelling and Branding: Placement and design of labels, tags, and branding elements on the garment.

Packaging Instructions: Guidelines on how the finished garment should be folded, packed, and presented for shipment.

2. IMPORTANCE OF TECH PACKS

Accuracy: Tech packs provide clear and precise instructions, minimizing errors and misunderstandings between designers and manufacturers.

Consistency: They ensure that the design and construction are consistent across different sizes and batches.

Communication: Tech packs bridge the gap between design and production teams, ensuring everyone is on the same page.

Cost Efficiency: Proper documentation helps reduce sample iterations, saving time and money in the production process.

Quality Control: Manufacturers can refer to tech packs to maintain the quality and integrity of the final product.

Customization: Brands can easily work with different manufacturers while maintaining the same design standards.

3. CREATING A TECH PACK

Design Concept: Start with a clear design concept, including sketches, color references, and fabric choices.

Technical Sketches: Create detailed flat sketches, specifying design elements, dimensions, and construction details.

Materials and Trims: Gather all materials and trims that will be used in the garment.

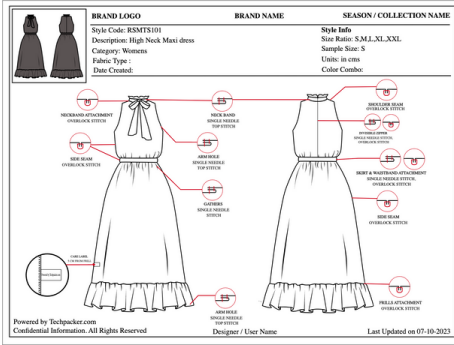
Measurements: Accurately measure the garment and note down all necessary measurements.

Construction Details: Describe how the garment should be assembled, specifying stitching techniques and finishes.

Grading: If applicable, include grading rules to adjust the design for different sizes.

Final Review: Thoroughly review the tech pack for accuracy and completeness.

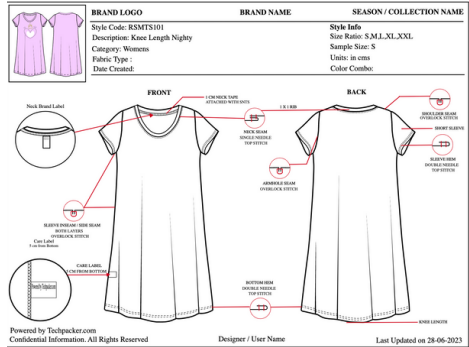
5.2 SAMPLE TECHNICAL SKETCHES FOR TECHPACK



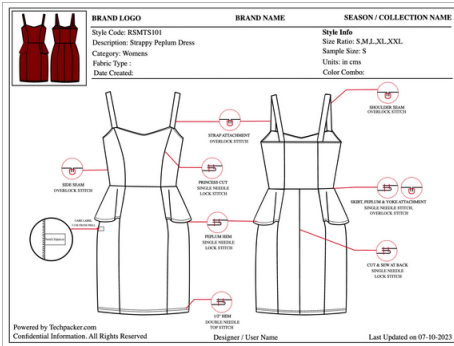
Sample 1:
Completely editable women's short night dress front and back technical sketches with seam diagrams and construction details.

[Repurpose Here >>>](#)

Sample 2:
Completely editable women's highneck maxi dress front and back technical sketches with seam diagrams and construction details.



[Repurpose Here >>>](#)



Sample 3:
Completely editable peplum dress Techpack front and back technical sketches with seam diagrams and construction details.

[Repurpose Here >>>](#)

[Repurpose More Techpack Ready Technical Sketches Here >>>](#)



PART 6:

STEP-BY-STEP DRESS
MAKING TUTORIAL ON
REPSKETCH

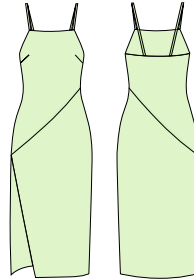
6.1

HOW TO DRAW A DRESS ON REPSKETCH?

1. ASSETS REQUIRED TO DRAW A DRESS ON REPSKETCH:



Women's Pencil Skirt



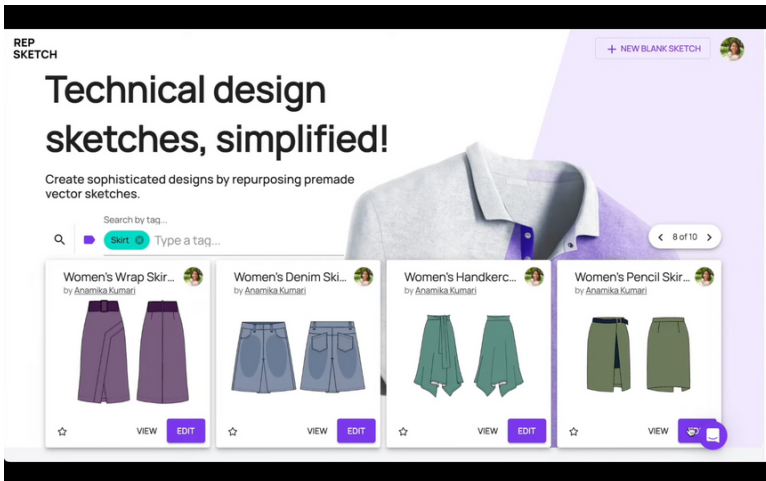
Women's Slip Dress

2. STEPS TO DRAW A T-SHIRT ON REPSKETCH:

[View Design Coach Youtube Video Here >>>](#)

Step 1:

Search **Dress** tag in the search bar on the Repsketch landing page & click **EDIT** on the sketch that you would like to repurpose.



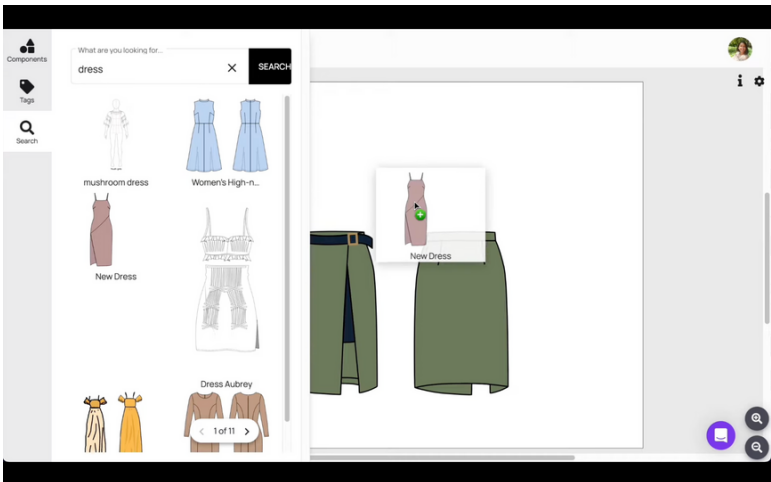
Step 2:

Drag and select all the dress design objects to group using the button at the bottom & resize the design to make space for the top half of dress.



Step 3:

Drag & Drop a dress sketch to your workspace from the Design Library to re-purpose and create the top half of our design.



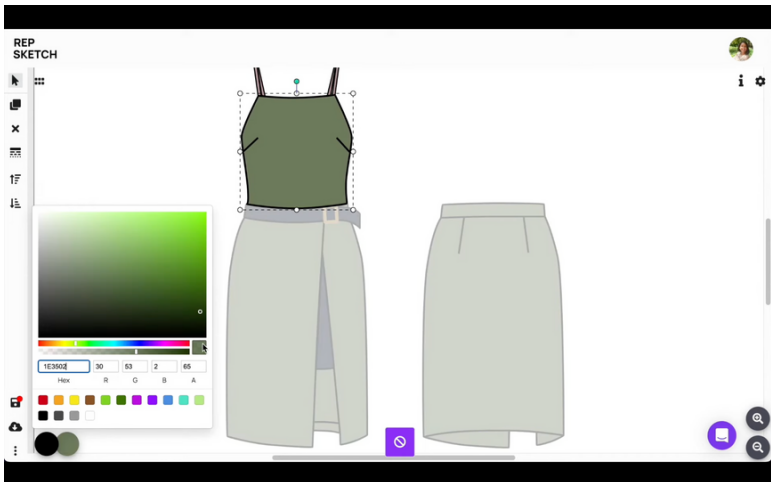
Step 4:

Edit group the dress to crop the bottom half of dress and adjust the waistline.



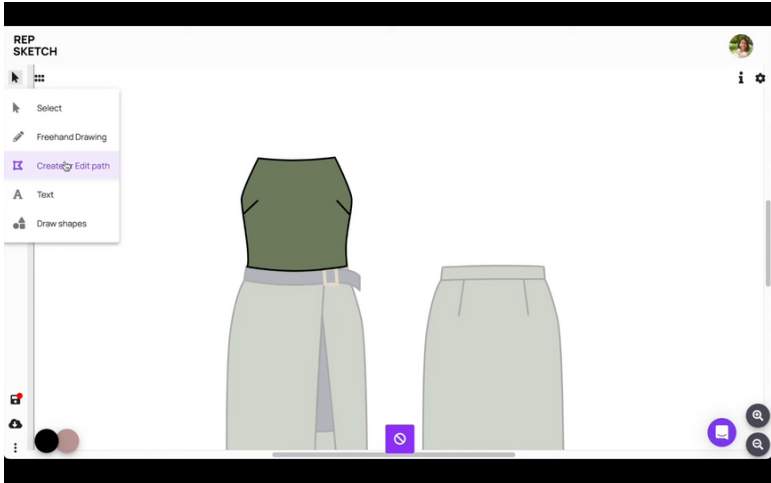
Step 5:

Change the color of the top of dress from the colorbar tool on the bottom-left of the screen, to match the bottom half.




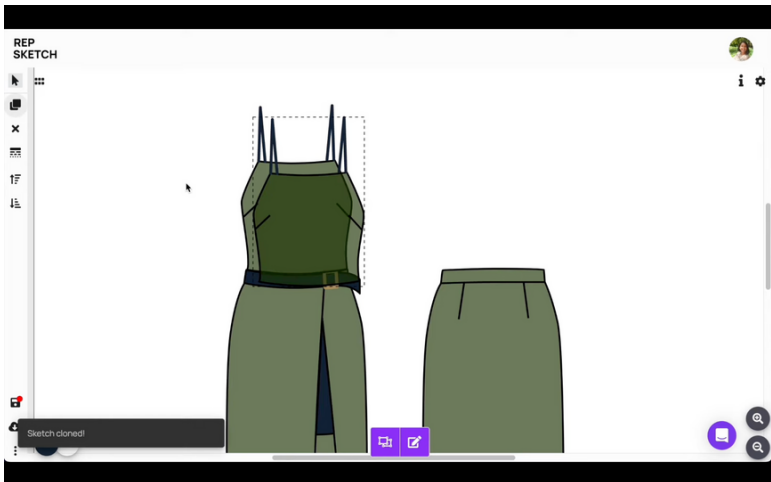
Step 6:

Delete existing dress straps and create a new one using the “Create/Edit Path” tool for both the sides.



Step 7:

Duplicate this front top half of the dress using  button on the left toolbar and create the top half of the back dress design.




Step 8:

Draw back hemline and extend the back straps.



Step 9:

Group all the dress front and back design objects together using the  button on the bottom.

